



# VINTAGE ORINDA

25 Orinda Way, Orinda, CA 94563

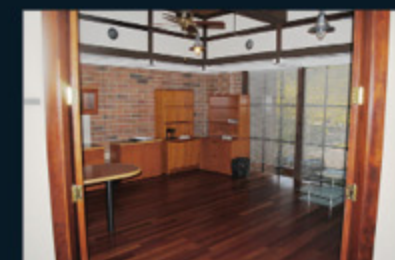
SH  
SLEEPY HOLLOW  
INVESTMENT COMPANY

“Landmark Orinda building:  
Old-world charm with modern  
offices in the heart of Orinda”

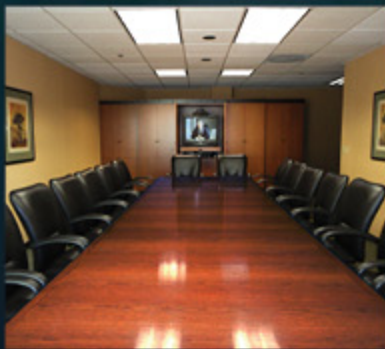
# SH

## VINTAGE - 2nd Flr (approx) 7,979 RSF

- One of the few office buildings in the heart of Orinda
- The architecture makes it an admired landmark in Orinda
- Inside, it has old world style but with fully modern spaces
- Parking 4/1000 RSF
- High-Speed Fiber
- Excellent Proximity to Bart
- Walking Distance to Restaurants and Shopping
- Furniture is Potentially Available

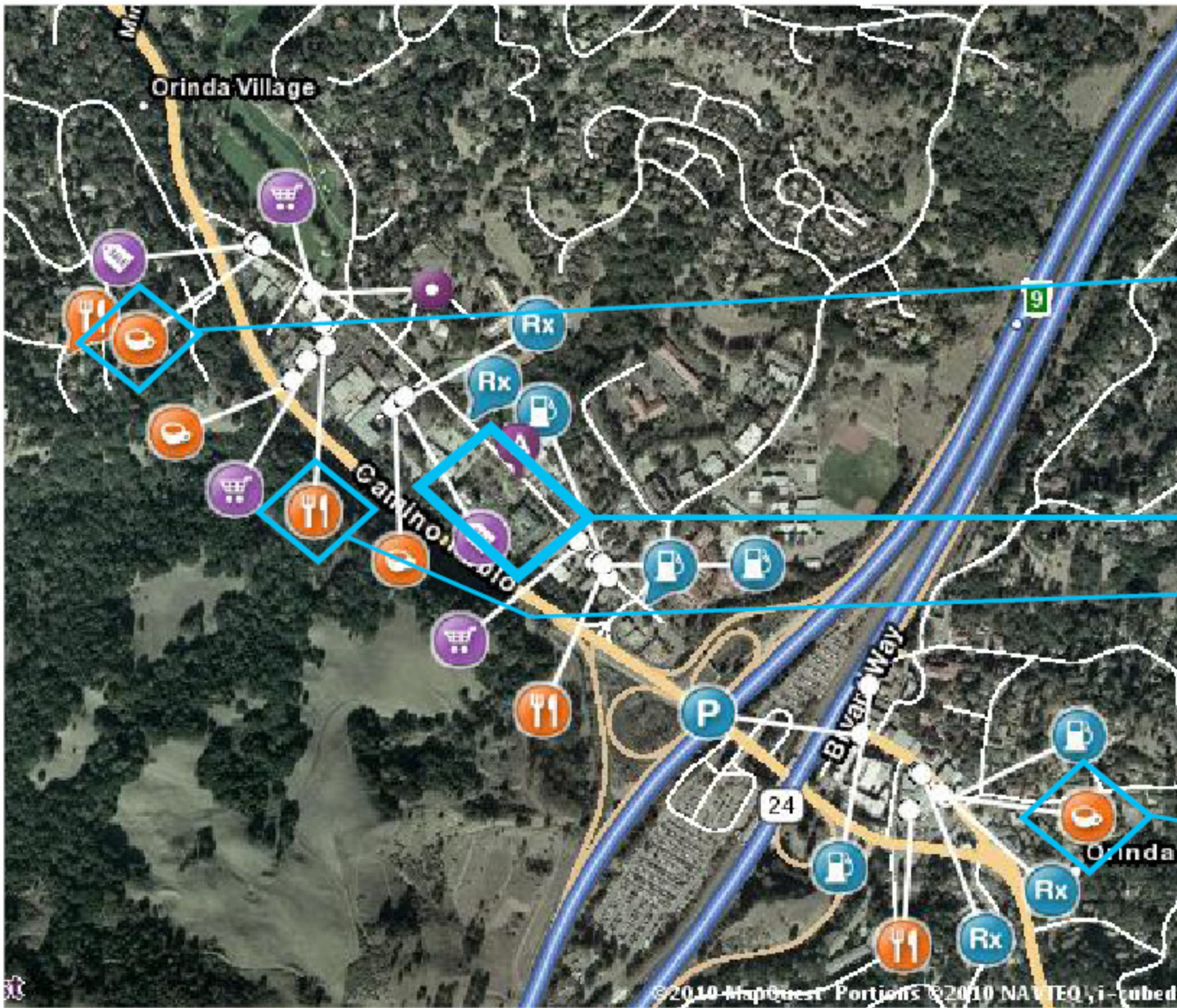


## Sleepy Hollow Investment Company: “Integrated Ownership and Management for Superior Service”



Sleepy Hollow Investment Company, established in 1975, is different from other Commercial Real Estate Investment companies. We own, manage and operate only our own properties. This distinction allows us to align our customer's interest with our own. We consider it a privilege to earn repeat business, which has been the key to our long-term success. We are proud of our philosophy of exceeding expectations through the highest level of quality service, professionalism and integrity. Our professional staff is here for you; passionate and dedicated to support your every need so your business may flourish.

**To view our office listings**  
Go to: [www.sleepyhollow.net](http://www.sleepyhollow.net) (click on Property By City)  
Adam Henderson 925.685.2600



**SAFEWAY**  
GROCERY STORE

**COUNTRY**  
CLUB PLAZA

**BISTRO**  
RESTAURANT

**STARBUCKS**  
COFFEE

**ZAMBIA'S**  
PIZZA

**NIWA**  
RESTAURANT

**VINTAGE**  
OFFICE BUILDING

**7 RESTAURANTS**  
VILLAGE INN CAFE

**ORINDA**  
VILLAGE SQUARE

**ORINDA**  
DELI

**PEET'S**  
COFFEE & TEA

**CHEVRON**  
GAS STATION

**RITE-AID**  
DRUG STORE

**RESTAURANTS**

LA COCINA MEXICANA.....SIAM ORCHID.....VILLAGE PIZZA.....ORINDA DELI.....HSIANGS MANDALIN CUISINE.....BISTRO.....NIWA RESTURANT